



# REGIONAL REVIEW

## Eastern WIA Highlights

### New store, new projects, and new contracts across the Eastern WIA

#### Artesia Area, Eddy County:

A group of extreme sports fanatics have opened an equipment and apparel store in Artesia named the **Tread Shed**. The Tread Shed stocks skateboards and skateboard apparel. Future plans are for the store to carry everything from bicycles to wakeboards and snowboards in the winter.

#### Carlsbad Area, Eddy County:

**Constructors Inc.** has been awarded \$932,400 in American Recovery and Reinvestment Act funding to construct a new salt storage evaporation pond at WIPP.

The **Eddy County Commission** has approved the sale of \$60 million in taxable industrial revenue bonds for a potash solution mining project expected to bring jobs to southeastern New Mexico.

The bonds will help finance facilities for Intrepid Potash, a subsidiary of Denver-based H.B. Potash LLC. Intrepid Potash estimates the entire project will cost about \$417 million and generate 40 to 60 permanent jobs in the Carlsbad area.

#### Clovis Area, Curry County:

The Whole Cow Deli at 121 East 7th Street in Clovis has closed. The popular lunch restaurant, which opened in 2004, changed owners last January.

#### Roswell Area, Chaves County:

**Dean Baldwin Painting** has secured three new contracts and is rehiring workers it laid off in June. The company had laid off some of its workers when high aircraft fuel prices slowed demand for service.

A seasonal dip in business during the summer peak travel months (when airlines have more planes in service) also contributed to the slowdown.

**SkyWest Airlines** recently announced plans to send its regional jets for painting service ahead of schedule this year, and United Airlines and American Eagle have signed new contracts with Dean Baldwin. The company owns a 165,000-square-foot hangar in Roswell that it converted into a temperature-controlled, six-bay facility capable of housing up to nine aircraft simultaneously.

Economic activity in the Eastern WIA is gathered from published articles, government documents, private and public sector news releases, and reports from local NMDWS Workforce Centers.



## New Data Released

**THE QUARTERLY** Census of Employment & Wages (QCEW) unit of the Economic Research & Analysis Bureau has released first quarter data this month. This unit produces a quarterly count of employment and wages by industry at the state-wide, WIA region, MSA, and county levels.

The total number of employees located in the Eastern WIA in first quarter was 127,568. The largest major industry sector was health care & social assistance followed by retail trade and public administration.

The first quarter QCEW data includes 2008 annual data. This employment data is available under the "Publications" tab at: [www.dws.state.nm.us/dws-lmi.html](http://www.dws.state.nm.us/dws-lmi.html)

Data at the WIA level is also be available in New Mexico's online labor market information system, **LASER**, at:

<http://laser.state.nm.us>

## QUICK FACTS

NATIONAL	NEW MEXICO	EASTERN WIA
UNEMPLOYMENT RATE <sup>1</sup> .....9.6%	UNEMPLOYMENT RATE .....7.6%	UNEMPLOYMENT RATE .....6.5%
INITIAL UI CLAIMS <sup>2</sup> .....28.7%	INITIAL UI CLAIMS <sup>3</sup> .....44.1%	INITIAL UI CLAIMS .....99.6%
CONTINUED UI CLAIMS .....81.3%	CONTINUED UI CLAIMS .....116.4%	CONTINUED UI CLAIMS .....208.7%

<sup>1</sup> Figures are not seasonally adjusted.

<sup>2</sup> Unemployment claims data is over-the-year percentage change.

<sup>3</sup> State and WIA counts represent regular UI claims without earnings for the week that included the twelfth of the month.

National data source: U.S. Department of Labor, Employment & Training Administration

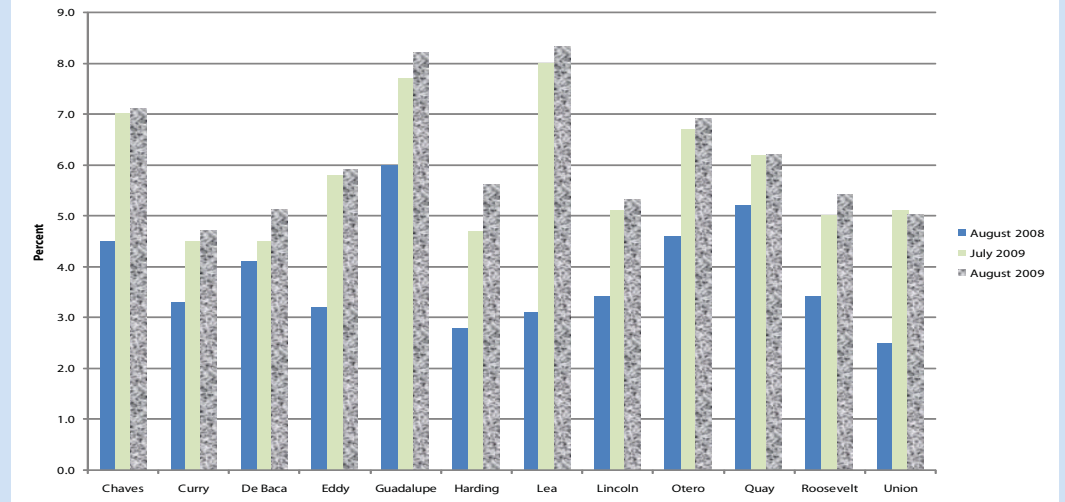
State and WIA data source: New Mexico Department of Workforce Solutions, Economic Research & Analysis Bureau, Program to Measure Insured Unemployed Statistics (PROMIS) database.

# Unemployment

**THE UNEMPLOYMENT** rate, not seasonally adjusted, for the Eastern WIA region was 6.5 percent, up from 6.3 percent in July. The highest unemployment rate in the Eastern WIA region was Lea County (8.3 percent), and the lowest rate was in Curry County (4.7 percent).

The total number of initial claims for the WIA region was 1,116, a 100 percent increase from the total number in August 2008. Continued claims have more than tripled since last year.

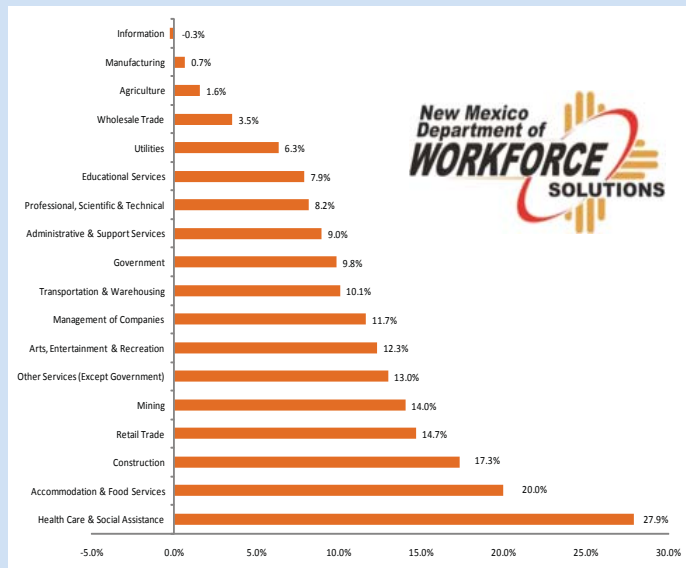
## UNEMPLOYMENT RATE BY COUNTY



Note: Figures not seasonally adjusted.

Source: New Mexico Department of Workforce Solutions, Economic Research & Analysis Bureau, LAUS Unit in conjunction with the U.S. Bureau of Labor Statistics.

## EASTERN WIA PROJECTED INDUSTRY PERCENT CHANGE 2008-2018



Source: New Mexico Department of Workforce Solutions, Economic Research & Analysis Bureau, 2008-2018 Projections.

# 2008-2018 Employment Projections "In Brief"

**THE 2018** Eastern WIA Employment Projections In Brief presents a summary of information about the region's job market and economy for ten years from 2008 to 2018. Additional information can be found in the 2018 In Brief, the Employment Projections 2018 for the other WIA regions and MSAs, and on our website at:

[www.dws.state.nm.us/dws-lmi.html](http://www.dws.state.nm.us/dws-lmi.html)

The Eastern WIA economy is expected to generate about 18,170 new jobs through the

year 2018. This represents growth of about 13.1 percent.

The healthcare & social assistance sector leads the growth by adding over 4,300 alone, followed by accommodation & food services and retail sales, projected to add over 5,000 jobs combined. Occupations with the highest annual openings make up a diverse group. Examples include: personal care aides, retail salespersons, registered nurses, oil & gas extraction workers, and administrative support workers.

## WIA LABOR FORCE

### Civilian Labor Force

..... 167,135

### Employment

..... 156,326

### Unemployment

..... 10,809

### Unemployment Rate

..... 6.5%

## OCCUPATIONAL SHORTAGES & SURPLUSES

Shortages	Surpluses
Agricultural Equipment Operators	Administrative Services Managers
Nursing Aides, Orderlies & Attendants	Receptionists & Information Clerks
Sales Representatives, Services	Cashiers
	Retail Salespersons
	Truck Drivers, Heavy & Tractor-Trailer
	Combined Food Prep & Serving Wrks
	Construction & Building Inspectors
	Construction Laborers
	Customer Service Representatives
	Exec Secretaries & Admin Assts
	1st-Line Sup/Mngrs of Retail Sales Wrks
	Home Health Aides
	Office Clerks
Statewide Occupational Rollover Statistics	
Cashiers	Sales Representatives, Services
Customer Service Representatives	
Nursing Aides, Orderlies & Attendants	
Retail Salespersons	

Notes: Based on posted job orders & resumes entered in the NM Workforce Connection System by occupation in the last 30 days (August 24, 2009). Occupational Rollover Statistics is an indicator of occupational activity with both numerous job orders and resumes in NM Workforce Connection.

Source: New Mexico Department of Workforce Solutions, Economic Research & Analysis Bureau.